



## IMPACT REPORT 2013



The Rio Salado Foundation is a 501 (c)(3) non-profit organization that manages historically significant restorations and economic development projects, funding more than \$15 million around Tempe Town Lake and Papago Park since 2001. The Foundation is the catalyst organization and the honest broker connecting individuals with projects to facilitate their completion. Through public-private partnerships and support from the City of Tempe, major donors such as SRP, APS, Salt River Pima-Maricopa Indian Community, Vestar and Cox Communications, to name a few, have been instrumental in the success of our projects.

The Foundation's completed projects include the relocation of the Sandra Day O'Connor House in 2010 and rejuvenation of Hayden Flour Mill site to create a Community Venue in 2012. The Foundation also participated in a collaboration to present the Papago Park Regional Master Plan, funded the grand opening of Tempe Center for the Arts and was instrumental in establishing the Children's Splash Playground at Tempe Beach Park as well as other funded projects. For more information, please visit [www.riosaladofoundation.org](http://www.riosaladofoundation.org)

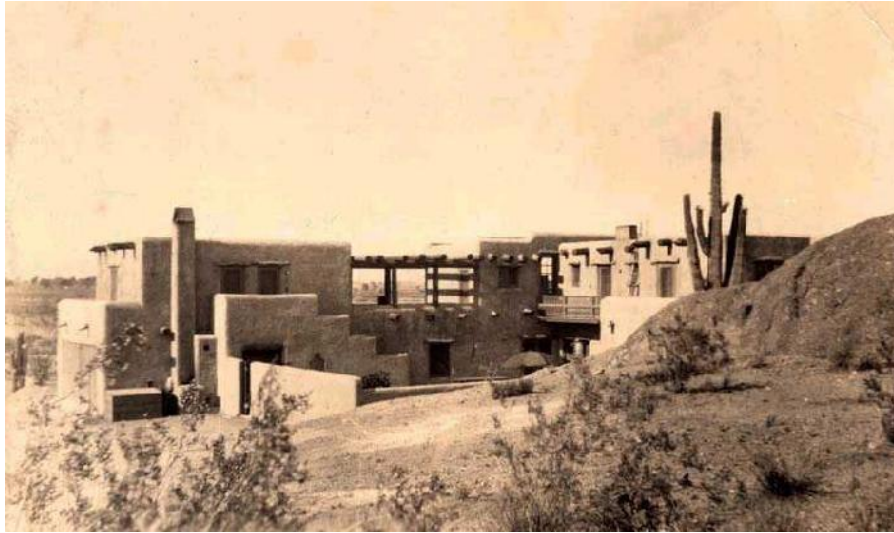
The Rio Salado Foundation was initially formed in 2001 to ensure the success of the Rio Salado Project. Governed by a board of directors over the past 12 years, the Foundation has supported the construction of several historical, cultural and recreational projects. The numerous benefits of bringing water back to the Rio Salado include the restoration of natural habitats, new residential and economic development opportunities and a wealth of recreational and cultural amenities for all Valley residents and visitors alike. With parks and museums, educational activities for children, and venues for performing arts and sporting events, the region is one of the most popular draws in the state with over 2.7 million visitors annually. Tempe Town Lake is one of Arizona's most popular attractions for fishing, jogging, boating, bicycling and many international and local sporting events such as the Ironman Triathlon.

Staff: Kim Knotter, Executive Director 602-421-8857 [kim@riosaladofoundation.org](mailto:kim@riosaladofoundation.org) and Kristin Patrick, Operations Director 602-689-5228 [kristin@riosaladofoundation.org](mailto:kristin@riosaladofoundation.org)



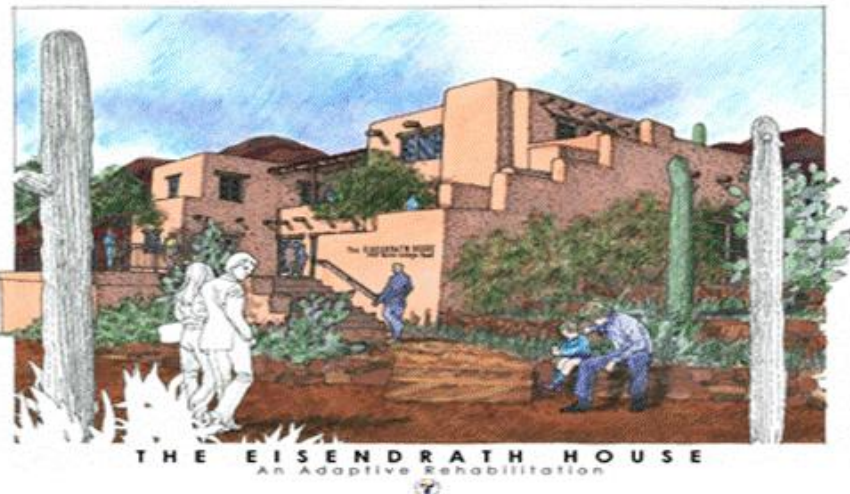
## CURRENT PROJECTS

### Eisendrath Center for Water Education: Carl Hayden Campus for Sustainability in Papago Park Phase II – Ongoing fundraising



Located adjacent to the eastern boundary of the original Papago-Saguaro National Monument is the historic Eisendrath House and its associated 9-plus acres of indigenous Sonoran Desert. This property has been acquired by the City of Tempe and is located on the Carl Hayden Campus for Sustainability in Papago Park. The Rio Salado Foundation has undertaken fundraising efforts and is managing the restoration of the project which is approximately 70% - 80% complete. The project budget is \$4.2 million and the Foundation is actively raising funds to complete the project and open the House.

Rose Eisendrath, a wealthy widow of a Chicago glove manufacturer, purchased the property and commissioned the house after being refused accommodations at a valley resort due to her Jewish ethnicity. The Eisendrath House is a Pueblo Revival-style structure that was designed and constructed of concrete, adobe and wood by local architect and master builder Robert Evans in 1929. Mrs. Eisendrath enjoyed five winters at LOMAKI during the early years of the 1930s. On Christmas Eve, December 24, 1936, Mrs. Eisendrath passed away at her pleasant winter home. After Mrs. Eisendrath's death, a succession of owners and tenants lived in the home. Although some modifications were made over time and some of the adobe walls have deteriorated due to water penetration, the structure retains a high degree of integrity and is listed on the Tempe Historic Property Register. It has also been declared eligible for listing on the National Register of Historic Places.



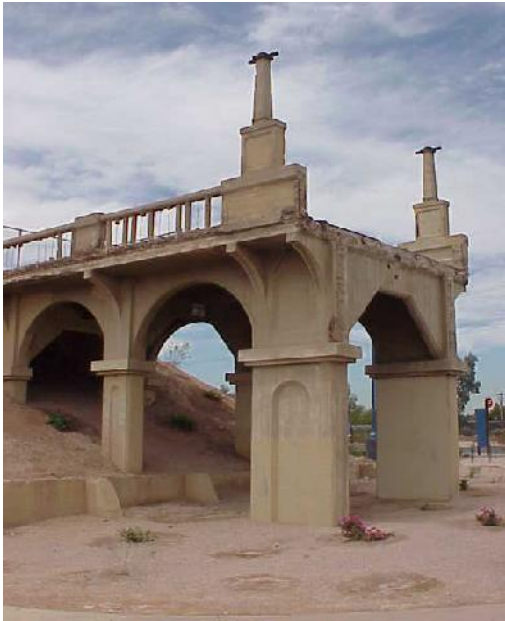
The Foundation is restoring the property for use as a historic landmark, a community meeting venue and will also house the City of Tempe Water Conservation Department in partnership with SRP. This will allow the house and property to serve the public as a reminder of the region's past and as a touchstone for its future as a sustainable, diverse community. A variety of interior and exterior spaces will provide opportunities for new and expanded programs in an unparalleled setting.

The Eisendrath Center for Water Education will include:

- A Tribute to Carl Hayden – This Tempe native, Maricopa County Sheriff, State Legislator, longest-serving U.S. Congressman and Senator will be honored by interactive exhibits on water conservation and recognized for his vital role in the Central Arizona Project.
- Rose Eisendrath Interpretive Center – The life of this strongwoman, the career of architect and master builder Robert Evans and other aspects of the history and restoration of the home and site will be described through messages and displays throughout the home and property.
- City of Tempe's Water Conservation Program – City offices and staff will be located at the Eisendrath House. Residents and visitors will be able to obtain information on water conservation and other sustainable practices.
- SRP Education Center – A free standing building used for water education classes as well as meeting space in a unique setting where civic, educational and neighborhood organizations can hold meetings, classes and special events upon request.
- Convenient Parking – Parking will be located onsite, with additional parking available nearby at the Arizona Historical Society Museum and the Johnny G. Martinez Water Treatment Facility.

## **Veterans Memorial-Tempe**

### **PHASE II: Ongoing fundraising**



Construction of the Ash Avenue Bridge began in 1911 and was completed in 1913. As one of only two bridged crossings of the Salt River, the bridge became a major point of connection between Phoenix and Tempe, as well as the rest of the east valley. However, design and construction deficiencies caused the bridge to become obsolete within a few years. Completion of the Mill Avenue Bridge in 1931 resulted in the closing of the Ash Avenue Bridge to vehicular traffic. Although it is listed on the National Register of Historic Places, the bridge was demolished around 1990 due to safety concerns related to the construction and utilization of Tempe Town Lake. The south abutment structure was left as a historic artifact and is now listed, along with Tempe Beach Stadium, on the Tempe Historic Property Register. The Ash Avenue Bridge abutment is located in Tempe Beach Park. The park has been in constant use since at least the 1920s. A swimming pool and bath house were constructed, along with a baseball stadium (with stone bleachers built on the east-facing slope of the south bridge approach), as part of a public works project in the 1930's. A major rehabilitation was completed in the 1990s, allowing the park to serve as a site for special events, including the celebration of the annual Tempe Veterans' Day Parade.

Phase I was completed and dedicated on November 12, 2012. The budget for this phase was \$500,000 and included the restoration of the Ash Avenue abutment, lighting, circular stairs and grading of land around the abutment. The future phases of the project include landscaping the existing abutment and a veteran's parade. The veteran's parade will feature silhouette laser cut panels of steel that represent veterans of each service throughout history. The panels will outline marching officers, enlisted men and women in full dress and battle fatigues. Concept plans have been developed which illustrate a restored structure supporting an observation platform overlooking Tempe Beach Park.





Rio Salado Foundation continues, at prior Council request, to seek funding to complete the additional phases of the project, which are projected to be \$600,000. The ultimate success of the campaign will require the generous contributions of corporations and individuals who recognize the long-term dividends of investing in honoring and remembering our veterans.

**Arizona Boathouse and Welcome Center  
Phase I: Research and Development**



The latest addition to the shores of Tempe Town Lake will be the Arizona Boathouse and Welcome Center, located next to the marina. The Boathouse will include boat and equipment storage, lakes access, multipurpose meetings spaces and offices. With these state-of-the-art facilities, the Arizona Boathouse will allow for the expansion of programs that serve the Valley’s families and youth as well as athletes from across the nation and around the world.

Project Components to include:

- Collegiate Rowing – ASU will be able to start a new intercollegiate crew program for men and women, and support the current rowing programs organized through the ASU Student Recreation Center.
- High School Rowing - Local high schools throughout the region are offering junior rowing clubs and competitive crew programs to their students.
- Youth Rowing, Paddling & Fishing - Underserved and at-risk students from valley youth centers and other organizations will gain greater opportunities to experience a variety of water-based recreation activities that otherwise would not be available
- Special Olympics Paddling - Athletes from Tempe, Mesa and Chandler practice their kayaking skills on Town Lake.

- Sailing for Students with Disabilities - ASU's Student Recreation Center offers sailing programs for students with disabilities, delivering both classroom instruction and on-the-water experience.
- Water Recreation Day Camp - Youth summer camp programs teach campers how to row, kayak, and paddle a dragon boat and an outrigger canoe.
- Clubs and Associations- A variety of boating clubs, including adult rowing clubs, Outrigger Canoe Clubs, Arizona Dragon Boat Club, Arizona Sailing Federation and Arizona yacht Club use the lake.
- National and Regional Events - Town Lake is a host venue for many groups and events such as U.S. Rowing Association regattas, visiting college rowing teams, national rowing teams, paddling camps, an outrigger canoe regatta, the cardboard boat regatta and the Arizona Dragon Boat Festival.
- As headquarters for the recreational clubs and programs at Town Lake, residents and visitors can sign up for a class, register for a race, buy a boat permit or purchase an event ticket—all under one roof.
- The facility will be a gathering place or pit stop for runners and walking clubs that circle the lake, and bike clubs that hit the trails of Papago Park.

## Completed and Supported Projects

### O'Connor House - The relocation of the home of Justice Sandra Day O'Connor



Rio Salado Foundation led the fundraising efforts and managed the relocation of the 1957 adobe house through a \$3.2 million capital campaign which effectively saved the house from demolition. The House is now operated by O'Connor House, a 501(c) (3) nonprofit organization.

The project is designed to celebrate, honor and sustain the vision of Sandra Day O'Connor by preserving the home that embodies her leadership and public service in Arizona and the United States. For 25 years, O'Connor used the home to bring people together in a relaxed, informal and inviting environment to discuss difficult issues, build understanding, and find solutions. These gatherings built Sandra Day O'Connor's reputation as a strong consensus-builder, a trait she carried with her to the U.S. Supreme Court. While living in the house, Sandra Day O'Connor was appointed in 1969 to the Arizona Senate, was re-elected twice, and became majority leader in 1972, the first woman to hold that title in the country.

*"In the 25 years that John and I lived in our adobe house, we hosted many events-for friends, colleagues, foreign visitors, legislators, members of Congress, and other distinguished individuals. We brought people from both sides of the aisle (R-D) and from other perspectives to share a home-cooked meal and good conversation, which resulted in a better chance for reaching consensus.*

*We all know that it is easier to reach agreement with friends – and we make friends through social contacts and shared experiences. When you become better acquainted and enjoy each other's company, you're less apt to be partisan and at odds when you are back at work (in Washington, in the state legislature, in town council meetings or in other venues where people come together to participate in democracy).*

*I know that it is possible for people to sit down together and engage in cooperative problem solving. This is what I want the O'Connor House to stand for. We can do it. The possibilities are endless.”  
-Justice Sandra Day O'Connor*



The home became a historic landmark of Arizona's and, arguably, our country's history when she was appointed as the first woman Justice to sit on the Supreme Court by President Ronald Reagan in 1981. The mission of O'Connor House is to continue the legacy of retired United States Supreme Court Justice Sandra Day O'Connor in solving important social, economic and political problems through civil talk leading to civic action. The House provides a unique setting for dialogue and consensus building on local, national and world issues. In addition, educational programming is offered that explores matters of importance to our community. Visit [www.oconnorhouse.org](http://www.oconnorhouse.org)

#### **Hayden Flour Mill & Rio Salado Drive Monument and Streetscape Phase I completed and opened November 2012**



The Hayden Flour Mill, with its tall white silos, is one of Tempe's most iconic structures. It has been unoccupied since 1998, fenced off from the public and a no trespassing zone for safety reasons. Revitalizing the Mill will hopefully attract development of the site that is in keeping with the historic and special nature of the building and grounds. The Hayden Flour Mill is located at the corner of Rio Salado Parkway and Mill Avenue, adjacent to Tempe Butte. Because of its location between Mill Avenue shops and businesses and Tempe Town Lake, this intersection continues to be one of the most active in Tempe, conducting as many as 3 million people annually.



The cost of the project was just over \$647,000. Funding came from private businesses and individuals and the City of Tempe with fundraising led by the Rio Salado Foundation. The work, detailed below, was completed in the fall of 2012.

- Showcasing the equipment inside the Flour Mill by moving key pieces to window areas and lighting them so they can be seen. Interpretative signage installed which details the important moments in the Flour Mill's history and explains the equipment and its uses
- A lighting system was installed to deter vandalism
- Monuments were erected on the east and west sides of Mill Avenue
- Boxed trees were placed on the grounds in front of the Mill. The plan was for the trees to be used by the City at various locations when needed. A watering system was also installed for vegetation
- The lower level of the Mill was sandblasted
- A great lawn and stage area was erected for events on the north side of the Mill
- The pathway to the Tempe Butte remains easy access

The maintenance and operations of the venue has been turned over to the city and is being managed by the Downtown Tempe Community.



### **Tempe Butte Rehabilitation and Preservation**

In partnership with the City of Tempe and the Salt River Pima Maricopa Indian Community, the Foundation helped to secure funds in the amount of \$800,000 toward the rehabilitation and preservation efforts of the Tempe Butte. The Hayden Butte Preserve was placed on the City of Tempe Historic Properties Register in 2008 which has allowed for minimizing the destruction of the ancient and sacred rock art that is scattered all across the Butte. In an effort to remove modern elements, more than 80% of the communication towers have been removed and relocated from the Butte.

### **Papago Park Regional Master Plan: Discover Papago Park**

A collaborative regional study and master plan involving Salt River Pima-Maricopa Indian Community, City of Tempe, City of Phoenix, City of Scottsdale, Olsson Associates, Pros Consulting, EcoPlan Associates, Inc., KDA Creative and Thinking Caps. The Master Plan includes a full area history, past planning efforts, site inventory and analysis that culminated with a community involvement piece and a final regional master plan notebook. The strategic plan includes recommendations, design guidelines with best practices, recommended signage program, organizational and operational management recommendations for the Papago Park area.

### **The Downstream Pedestrian Bridge**

The bridge, located just west of Tempe Center for the Arts connects the south shores of Tempe Town Lake with the north bank. The architecturally significant bridge transforms the lake on the west end providing the only means of travel for pedestrians shore to shore.



**Tempe Center for the Arts Opening**

\$450,000 raised in 2007 to support the opening of TCA



**Tempe Dam Burst - Events Support**

\$230,000 was spent to refund event fees and other costs that would have been lost due to the unexpected deflation of the downstream dams on Town Lake in 2010. The events that would have taken place on or around the Tempe Town Lake during that time are instrumental in demonstrating the Lake’s viability and its importance to the community. All funds came from Rio Salado Foundation general funds.



**Tempe Light and Boat Parade Support**

\$45,000 raised and donated to DTC in 2010 to support Light and Boat Parade funding in economic downturn.

**Children’s Splash Playground at Tempe Beach Park**

\$1.5 million raised in 1999-2000. Playground was complete in May 2002. The largest inter-active water feature in the metro area is located just a few hundred feet from Town Lake’s edge. This water wonderland offers children of all ages a free, safe playground built just for them. The playground has become a local favorite with thousands of families flocking to its water every week and enjoying the myriad of activities at Tempe Beach Park. This oasis is a guaranteed year-round attraction and a special playground for children.

